

Human CCL24 Protein

Cat. No. CCL-HM224

Description

Source	Recombinant Human CCL24 Protein is expressed from HEK293 with hFc tag at the N-Terminus. It contains Val27-Cys119.
Accession	O00175
Molecular Weight	The protein has a predicted MW of 36.5 kDa. Due to glycosylation, the protein migrates to 40-50 kDa based on Bis-Tris PAGE result.
Endotoxin	Less than 1EU per μg by the LAL method.
Purity	> 95% as determined by Bis-Tris PAGE

Formulation and Storage

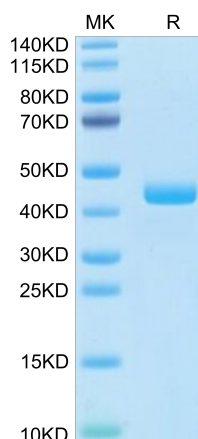
Formulation	Lyophilized from 0.22 μm filtered solution in PBS (pH 7.4). Normally 8% trehalose is added as protectant before lyophilization.
Reconstitution	Centrifuge the tube before opening. Reconstituting to a concentration more than 100 $\mu\text{g}/\text{ml}$ is recommended. Dissolve the lyophilized protein in distilled water.
Storage	-20 to -80°C for 12 months as supplied from date of receipt. -80°C for 3 months after reconstitution. Recommend to aliquot the protein into smaller quantities for optimal storage. Please minimize freeze-thaw cycles.

Background

C-C motif chemokine ligand 24 (CCL24) is a chemokine that regulates inflammatory and fibrotic activities through its receptor, C-C motif chemokine receptor (CCR3). CCL24 is a chemokine that regulates inflammation and fibrosis. It was found to be significantly expressed in patients with non-alcoholic steatohepatitis, in whom it regulates profibrotic processes in the liver.

Assay Data

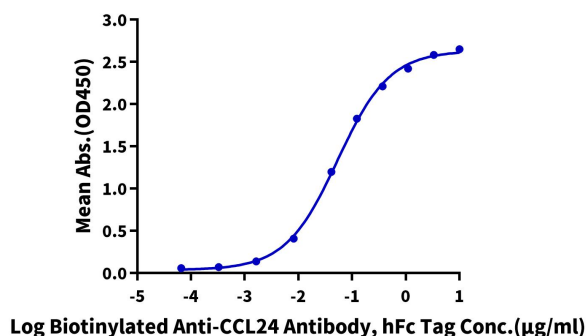
Bis-Tris PAGE



Human CCL24 on Bis-Tris PAGE under reduced condition. The purity is greater than 95%.

ELISA Data

Human CCL24, hFc Tag ELISA
0.1 μg Human CCL24, hFc Tag Per Well



Immobilized Human CCL24, hFc Tag at 1 $\mu\text{g}/\text{ml}$ (100 $\mu\text{l}/\text{Well}$) on the plate. Dose response curve for Biotinylated Anti-CCL24 Antibody, hFc Tag with the EC50 of 53.8ng/ml determined by ELISA.